

KEY PLAN

SCALE 1:1000

UTILITY LOCATES
 NO RESPONSIBILITY IS IMPLIED OR ASSUMED BY THE ENGINEER/LANDSCAPE ARCHITECT AS TO THE LOCATION AND ELEVATION OF ANY UTILITY. THE CONTRACTOR IS RESPONSIBLE FOR DETERMINING THE EXISTENCE AND LOCATION OF ALL UTILITIES THAT MAY BE IMPACTED AND MUST CONTACT THE VARIOUS UTILITY COMPANIES FOR THIS SITE PRIOR TO COMMENCEMENT OF ANY OPERATIONS. PROVIDE ENGINEER/LANDSCAPE ARCHITECT WITH COPY OF ALL LOCATE REPORTS.

PLANT SCHEDULE

Key	Total Qty	Common Name	Botanical Name	Size	Remarks
Trees					
CS	31	Columnar Blue Colorado Spruce	<i>Picea pungens</i> 'Fastigiata'	3500mm ht.	W.B. single leader/ specimen
PB	22	Parkland Pillar Japanese White Birch	<i>Betula platyphylla</i> 'Jeltpark'	75mm Cal.	W.B. single leader/ specimen
SL	7	Siberian Larch	<i>Larix sibirica</i>	45mm Cal. (#5 Pot)	W.B. single leader/ specimen
WS	18	White Spruce	<i>Picea glauca</i>	2400-3000mm ht.	W.B. single leader/ specimen

PLANT SCHEDULE - ADDITIONAL PLANTS

Key	Total Qty	Common Name	Botanical Name	Size	Remarks
Trees					
CS	1	Columnar Blue Colorado Spruce	<i>Picea pungens</i> 'Fastigiata'	3500mm ht.	W.B. single leader/ specimen
Shrubs					
rd	7	Red Osier Dogwood	<i>Cornus stolonifera</i>	450-600mm ht.	container / specimen
hc	3	American Highbush Cranberry	<i>Viburnum trilobum</i>	450-600mm ht.	container / specimen
pr	6	Prickly Wild Rose	<i>Rosa acicularis</i>	300-450mm ht.	container / specimen
Sod					
-	450 Lm	Nature's Turf	-	-	600mm roll

PLANT IMAGES



NOTES

PLANTING NEAR UTILITIES - Volume 1 Table of Minimum Offsets (Landscape)

- 1.1 The contractor will contact Provincial utility location agency no less than 48 hours prior to construction to locate and stake all underground utilities.
- 1.2 Prior to installation of plant material, the consultant will inspect and approve all staked tree locations with regards to utilities as located by utility location agency.
- 1.3 Where possible, trees shall be set back a minimum distance, measured from the center of the tree trunk, from above and below grade utilities and property lines as follows:

Distance from Light Standards/Power Hardware	3.0m
Distance from Fire Hydrants	
Deciduous Tree	3.5m
Coniferous Tree	7.0m
Distance from Stop Signs	3.5m
Distance from Yield Signs	3.5m
Distance from Transit Zones	3.5m*
Distance from Other Signs	2.0m
Distance from Private Property on Walkway ROW	1.0m
Distance from Private Property on Open Parkland	
Deciduous Tree (from center of tree)	2.5m
Coniferous Tree (from edge of mature spread)	2.5m
Distance from Private Property on Boulevards	1.0m
Distance from Shallow Underground Utilities:	1.0m
N.U.L.-no trees within easement	
Distance from Gas or Oil ROW	Contact Utility
Distance from Deep Underground Utilities	1.5m
Distance from Sanitary and Storm Sewers	1.8m
Distance to Sanitary and Storm Sewers and Manholes	2.0m
Distance from Water Mains	
Deciduous Tree	1.8m
Coniferous Tree	3.5m
- 1.4 There shall be no mulched beds within 2.5m of curb on boulevards along arterial and collector roadways.
- 1.5 All tree species to be a minimum of 2.5m from fence lines.
- 1.6 All mature shrub spread is to be 500mm from edge of shrub bed, fence or edge of sidewalk.
- 1.7 Maintain the minimum defined setbacks from utilities for all excavations.
- 1.8 All tree / shrub excavation closer than the minimum distance to underground utilities shall be hand-dug. The contractor will be responsible for notifying the consultant and affected utility representatives to review and approve all hand-dug excavations. Affected utility representatives must be present to supervise all hand-dug excavations.
- 1.9 Prevent damage to fencing, plant materials, natural features, benchmarks, buildings, pavement, curbs, culverts, and utilities, and make good any changes.
- 1.10 No metal tree stakes to be used within one (1) meter of a power trench.
- 1.11 Shrubs are not permitted from 1.0m behind a hydrant to the road or for 1.5m on either side of the hydrant.

* Distances less than indicated above, are at the discretion of the Director/Parks in consultation with Transportation Services.
 Note: Setback distances apply to both Boulevards and Medians.

LANDSCAPE ARCHITECT REVIEW REQUIREMENTS:

- A) finished grade before shrub planting.
- B) plant material at source.
- C) bed and planting layout.
- D) CCC Pre - Inspection
- E) CCC Inspection with the City of Edmonton Inspectors
- F) CCC Deficiency Inspection.
- G) spring warranty inspection-first year.
- H) spring warranty inspection-second year.
- I) FAC Pre - Inspection.
- J) FAC Inspection with City of Edmonton Inspectors
- K) FAC Deficiency Inspection

APPROVAL AND REJECTION:

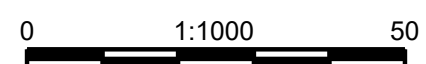
City of Edmonton Inspectors have final authority on acceptability of work at CCC & FAC Inspections.

ALL UTILITY LOCATIONS ARE TO BE VERIFIED PRIOR TO PROCEEDING WITH CONSTRUCTION. ALL UTILITY LOCATIONS ARE TO BE FLAGGED, REVIEWED AND APPROVED IN CONJUNCTION WITH PROPOSED TREE LOCATIONS.

THIS DRAWING AND DESIGN IS THE PROPERTY OF McELHANNEY AND SHALL NOT BE USED, REUSED OR REPRODUCED WITHOUT THE CONSENT OF McELHANNEY. McELHANNEY WILL NOT BE HELD RESPONSIBLE FOR THE IMPROPER OR UNAUTHORIZED USE OF THIS DRAWING AND DESIGN.

THIS DRAWING AND DESIGN HAS BEEN PREPARED FOR THE CLIENT IDENTIFIED, TO MEET THE STANDARDS AND REQUIREMENTS OF THE APPLICABLE PUBLIC AGENCIES AT THE TIME OF PREPARATION. McELHANNEY, ITS EMPLOYEES, SUBCONSULTANTS AND AGENTS WILL NOT BE LIABLE FOR ANY LOSSES OR OTHER CONSEQUENCES RESULTING FROM THE USE OR RELIANCE UPON, OR ANY CHANGES MADE TO, THIS DRAWING, BY ANY THIRD PARTY, INCLUDING CONTRACTORS, SUPPLIERS, CONSULTANTS AND STAKEHOLDERS, OR THEIR EMPLOYEES OR AGENTS, WITHOUT McELHANNEY'S PRIOR WRITTEN CONSENT.

INFORMATION ON EXISTING UNDERGROUND FACILITIES MAY NOT BE COMPLETE OR ACCURATE. McELHANNEY, ITS EMPLOYEES AND DIRECTORS ARE NOT RESPONSIBLE NOR LIABLE FOR THE LOCATION OF ANY UNDERGROUND CONDUITS, PIPES, CABLES OR OTHER FACILITIES WHETHER SHOWN OR OMITTED FROM THIS PLAN. PRIOR TO CONSTRUCTION CONTRACTOR SHALL EXPOSE LOCATIONS OF ALL EXISTING FACILITIES BY HAND DIGGING OR HYDROVAC AND ADVISE THE ENGINEER OF POTENTIAL CONFLICTS.



Unit 201
 13455 114 Avenue NW
 Edmonton AB
 Canada T5M 2E2
 Tel 780 809 3200

SUMMER VILLAGE OF ITASKA BEACH
 #10 Norwood Close, Wetaskiwin, AB, T9A 1K2
BEACH ROAD LANDSCAPE IMPROVEMENTS KEY PLAN

Drawing No. **L101**
 Project Number 2131-00576-01
 Rev. 01

Rev	Date	Description	Drawn	Design	App'd
01	2024-07-25	SITE INSTRUCTION 01	JM	CO	DB
00	2022-09-30	ISSUED FOR CONSTRUCTION	JM	CO	DB

ORIGINAL DWG SIZE: ANSI D (22" x 34")

Permit Approved Sealed

PIGEON LAKE, AB

LEGEND

	RETAIN EXISTING TURF AREAS		ALL EXISTING TURF AREAS TO BE STRIPPED ROTO-TILLED AND FINE GRADED FOR WILDFLOWER SEED INSTALLATION.
	100mm DEPTH SHREDDED SELF-BINDING BARK WOOD MULCH TO BE PLACED LEVEL WITH ADJACENT SURFACES, CROWN IN CENTER OF ALL SHRUB BEDS AND TREE WELLS.		EXISTING BUSH / TREE LINE
	FIBRE OPTIC / COMMUNICATION CABLE & JUNCTION BOX		POWER POLE W/ OVERHEAD CABLES (SHOWING DIRECTION)
	WATERLINE & MANHOLE		CULVERT
	PROPERTY LINE		TREE TRENCH C/W CLEAN CUT EDGE
	CLEAN CUT EDGE		WILDFLOWER SEED EDGE
	SANITARY LINE		GAS LINE
	ADD NATURES TURF		ADD TREE TRENCH C/W CLEAN CUT EDGE
	TREE LEADER TO BE ADJUSTED		

<p>SHORT BUTTERFLY PRAIRIE MIX</p> <p>0.7% HEARTLEAF ALEXANDER 0.7% HAREBELL 0.4% YARROW 1.4% CUTLEAF ANEMONE 1.4% BLUE EYED GRASS 5.4% CONEFLOWER 2.8% PURPLE PRAIRIE CLOVER 0.4% PHILADELPHIA FLEABANE 0.7% WILD BERGAMOT 1.4% LONG FRUITED ANEMONE 0.4% DOTTED BLAZING STAR 0.4% MEADOW BLAZING STAR 5.4% SHOWY GOLDENROD 4.2% GAILLARDIA</p> <p>RATE OF APPLICATION OPTIONS: 28 gram mix - 215 sq.ft 140 gram mix - 1076 sq.ft 700 gram mix - 5380 sq.ft</p>	<p>1.8% PINK ONION 2.9% UPLAND WHITE ASTER 2.1% WESTERN SILVERY ASTER 7% LOW GOLDENROD 3.6% MANY FLOWERED ASTER 1.4% WHITE PRAIRIE CLOVER 3.6% GUMWEED 0.4% WHITE CINQUEFOIL 1.1% ALUMROOT 0.4% PASTURE SAGE 5% SHEEP FESCUE 14% JUNE GRASS 18% LITTLE BLUESTEM 2% SIDE OATS GRAMA 11% BLUE GRAMA</p>
--	---

PLANT SYMBOLS

PROPOSED TREES

PROPOSED SHRUBS

PLANT SCHEDULE

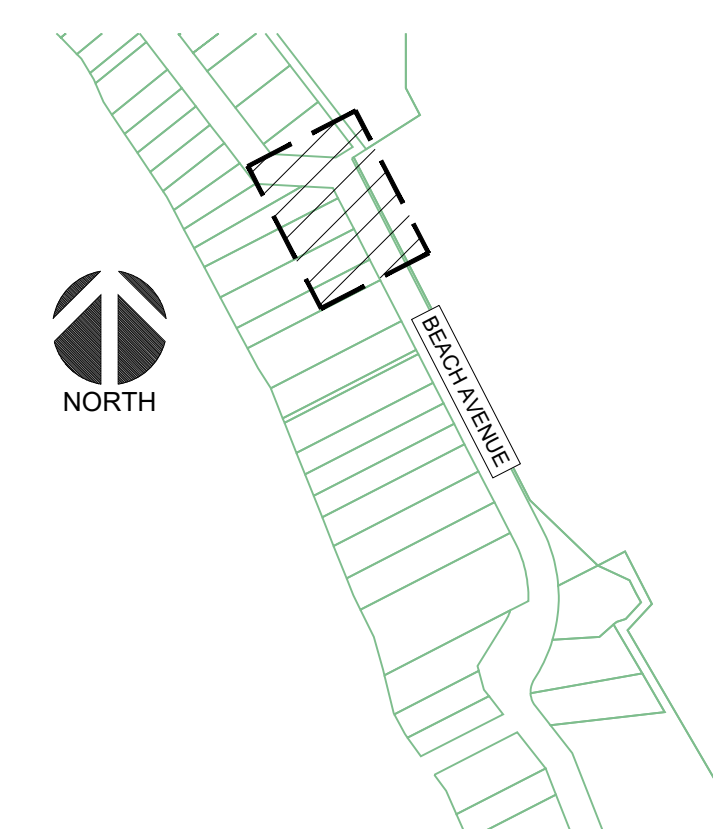
Key	Total Qty	Common Name	Botanical Name	Size	Remarks
Trees					
CS	31	Columnar Blue Colorado Spruce	<i>Picea pungens 'Fastigiata'</i>	3500mm ht.	W.B. single leader/ specimen
PB	22	Parkland Pillar Japanese White Birch	<i>Betula platyphylla 'Jel'park'</i>	75mm Cal.	W.B. single leader/ specimen
SL	7	Siberian Larch	<i>Larix sibirica</i>	45mm Cal. (#5 Pot)	W.B. single leader/ specimen
WS	18	White Spruce	<i>Picea glauca</i>	2400-3000mm ht.	W.B. single leader/ specimen

PLANT SCHEDULE - ADDITIONAL PLANTS

Key	Total Qty	Common Name	Botanical Name	Size	Remarks
Trees					
CS	1	Columnar Blue Colorado Spruce	<i>Picea pungens 'Fastigiata'</i>	3500mm ht.	W.B. single leader/ specimen
Shrubs					
rd	7	Red Osier Dogwood	<i>Cornus stolonifera</i>	450-600mm ht.	container / specimen
hc	3	American Highbush Cranberry	<i>Viburnum trilobum</i>	450-600mm ht.	container / specimen
pr	6	Prickly Wild Rose	<i>Rosa acicularis</i>	300-450mm ht.	container / specimen
Sod					
-	450 l.m	Nature's Turf	-	-	600mm roll

UTILITY LOCATES

NO RESPONSIBILITY IS IMPLIED OR ASSUMED BY THE ENGINEER/LANDSCAPE ARCHITECT AS TO THE LOCATION AND ELEVATION OF ANY UTILITY. THE CONTRACTOR IS RESPONSIBLE FOR DETERMINING THE EXISTENCE AND LOCATION OF ALL UTILITIES THAT MAY BE IMPACTED AND MUST CONTACT THE VARIOUS UTILITY COMPANIES FOR THIS SITE PRIOR TO COMMENCEMENT OF ANY OPERATIONS. PROVIDE ENGINEER/LANDSCAPE ARCHITECT WITH COPY OF ALL LOCATE REPORTS.

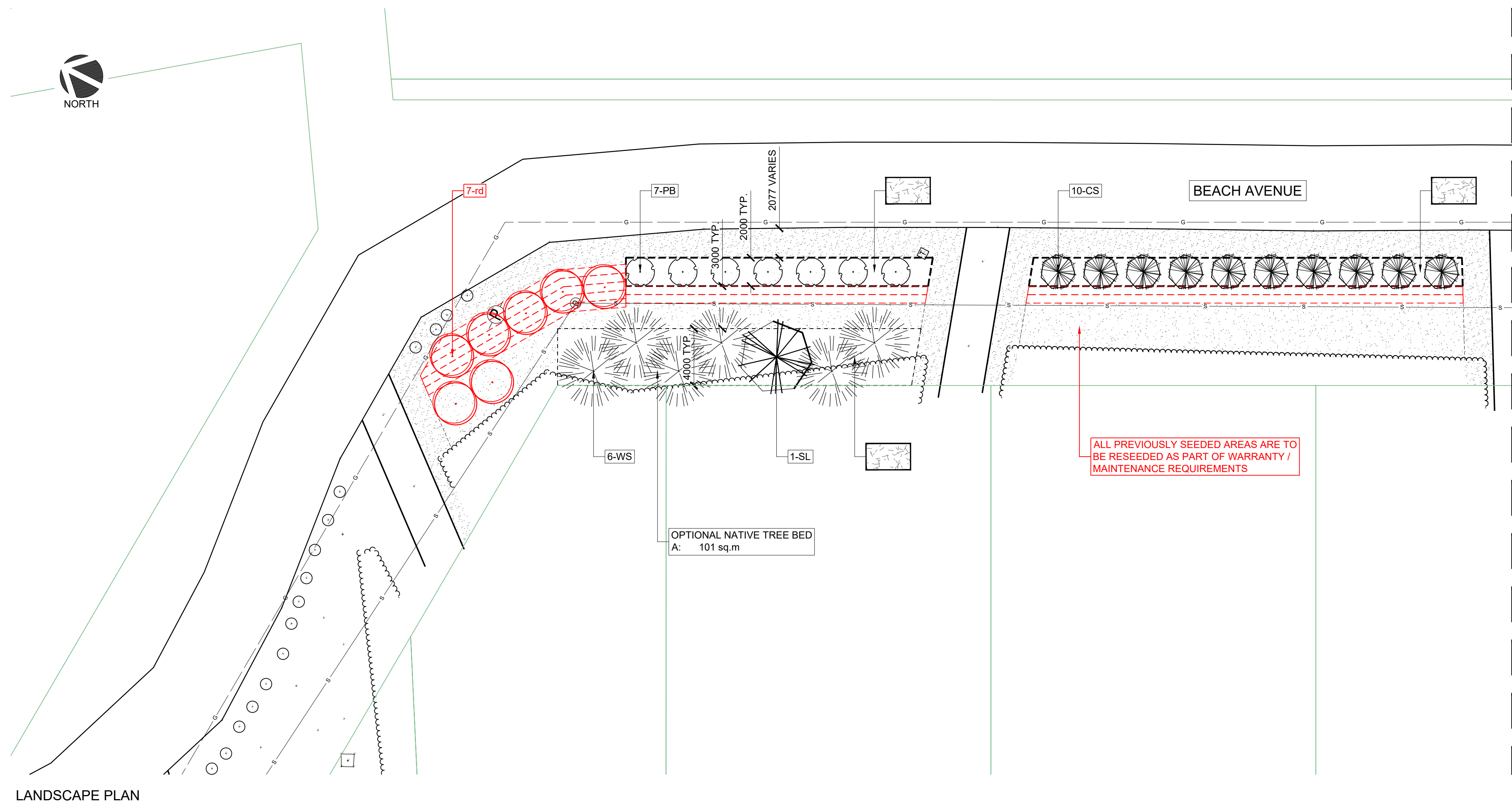


KEY PLAN

SCALE 1:5000

NOTE

- CONTRACTOR TO PROTECT ALL PLANT MATERIAL FROM WILDLIFE - ANY FURTHER DAMAGES TO PLANT MATERIAL SHALL BE REPLACED AT CONTRACTORS COST



LANDSCAPE PLAN

SCALE 1:200

Rev	Date	Description	Drawn	Design	App'd
01	2024-07-25	SITE INSTRUCTION 01	JM	CO	DB
00	2022-09-30	ISSUED FOR CONSTRUCTION	JM	CO	DB

THIS DRAWING AND DESIGN IS THE PROPERTY OF McELHANEY AND SHALL NOT BE USED, REUSED OR REPRODUCED WITHOUT THE CONSENT OF McELHANEY. McELHANEY WILL NOT BE HELD RESPONSIBLE FOR THE IMPROPER OR UNAUTHORIZED USE OF THIS DRAWING AND DESIGN.

THIS DRAWING AND DESIGN HAS BEEN PREPARED FOR THE CLIENT IDENTIFIED, TO MEET THE STANDARDS AND REQUIREMENTS OF THE APPLICABLE PUBLIC AGENCIES AT THE TIME OF PREPARATION. McELHANEY, ITS EMPLOYEES, SUBCONSULTANTS AND AGENTS WILL NOT BE LIABLE FOR ANY LOSSES OR OTHER CONSEQUENCES RESULTING FROM THE USE OR RELIANCE UPON, OR ANY CHANGES MADE TO, THIS DRAWING, BY ANY THIRD PARTY, INCLUDING CONTRACTORS, SUPPLIERS, CONSULTANTS AND STAKEHOLDERS, OR THEIR EMPLOYEES OR AGENTS, WITHOUT McELHANEY'S PRIOR WRITTEN CONSENT.

INFORMATION ON EXISTING UNDERGROUND FACILITIES MAY NOT BE COMPLETE OR ACCURATE. McELHANEY, ITS EMPLOYEES AND DIRECTORS ARE NOT RESPONSIBLE NOR LIABLE FOR THE LOCATION OF ANY UNDERGROUND CONDUITS, PIPES, CABLES OR OTHER FACILITIES WHETHER SHOWN OR OMITTED FROM THIS PLAN. PRIOR TO CONSTRUCTION CONTRACTOR SHALL EXPOSE LOCATIONS OF ALL EXISTING FACILITIES BY HAND DIGGING OR HYDROVAC AND ADVISE THE ENGINEER OF POTENTIAL CONFLICTS.



ORIGINAL DWG SIZE: ANSI D (22" x 34")

McElhanney

Unit 201
13455 114 Avenue NW
Edmonton AB
Canada T5M 2E2
Tel 780 809 3200

Permit

Approved Sealed

SUMMER VILLAGE OF ITASKA BEACH
#10 Norwood Close, Wetaskiwin, AB, T9A 1K2

BEACH ROAD LANDSCAPE IMPROVEMENTS LANDSCAPE PLAN

PIGEON LAKE, AB

Drawing No. **L102**

Project Number 2131-00576-01

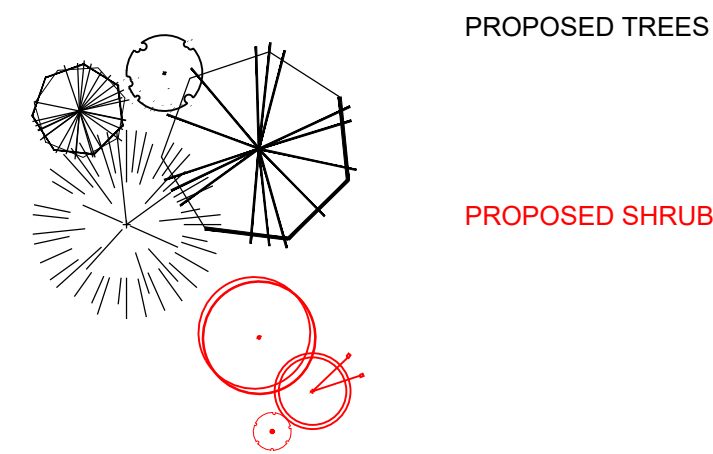
Rev. 01

LEGEND

- RETAIN EXISTING TURF AREAS
- 100mm DEPTH SHREDDED SELF-BINDING BARK WOOD MULCH TO BE PLACED LEVEL WITH ADJACENT SURFACES, CROWN IN CENTER OF ALL SHRUB BEDS AND TREE WELLS.
- EXISTING BUSH / TREE LINE
- FIBRE OPTIC / COMMUNICATION CABLE & JUNCTION BOX
- POWER POLE W/ OVERHEAD CABLES (SHOWING DIRECTION)
- WATERLINE & MANHOLE
- CULVERT
- PROPERTY LINE
- TREE TRENCH C/W CLEAN CUT EDGE
- CLEAN CUT EDGE
- WILDFLOWER SEED EDGE
- SANITARY LINE
- GAS LINE
- ADD NATURES TURF
- ADD TREE TRENCH C/W CLEAN CUT EDGE
- TREE LEADER TO BE ADJUSTED

- ALL EXISTING TURF AREAS TO BE STRIPPED ROTO-TILLED AND FINE GRADED FOR WILDFLOWER SEED INSTALLATION.
- SHORT BUTTERFLY PRAIRIE MIX
 - 0.7% HEARTLEAF ALEXANDER
 - 0.7% HAREBELL
 - 0.4% YARROW
 - 1.4% CUTLEAF ANEMONE
 - 1.4% BLUE EYED GRASS
 - 5.4% CONEFLOWER
 - 2.8% PURPLE PRAIRIE CLOVER
 - 0.4% PHILADELPHIA FLEABANE
 - 0.7% WILD BERGAMOT
 - 1.4% LONG FRUITED ANEMONE
 - 0.4% DOTTED BLAZING STAR
 - 0.4% MEADOW BLAZING STAR
 - 5.4% SHOWY GOLDENROD
 - 4.2% GAILLARDIA
- RATE OF APPLICATION OPTIONS:
 - 28 gram mix - 215 sq.ft
 - 140 gram mix - 1076 sq.ft
 - 700 gram mix - 5380 sq.ft
- 1.8% PINK ONION
- 2.9% UPLAND WHITE ASTER
- 2.1% WESTERN SILVERY ASTER
- 7% LOW GOLDENROD
- 3.6% MANY FLOWERED ASTER
- 1.4% WHITE PRAIRIE CLOVER
- 3.6% GUMWEED
- 0.4% WHITE CINQUEFOIL
- 1.1% ALUMROOT
- 0.4% PASTURE SAGE
- 5% SHEEP FESCUE
- 14% JUNE GRASS
- 18% LITTLE BLUESTEM
- 2% SIDE OATS GRAMA
- 11% BLUE GRAMA

PLANT SYMBOLS



PLANT SCHEDULE

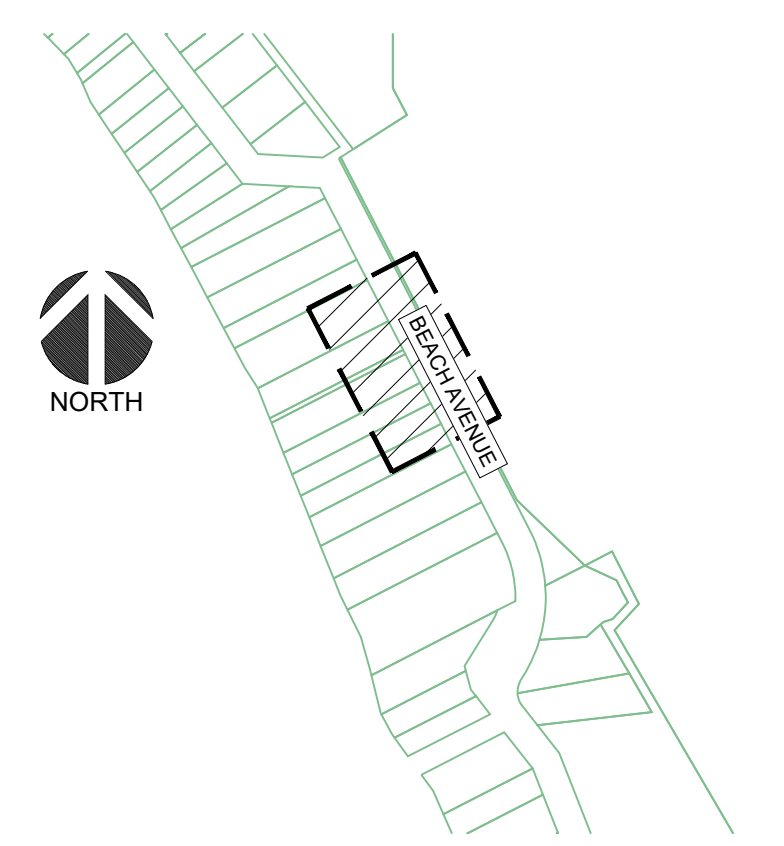
Key	Total Qty	Common Name	Botanical Name	Size	Remarks
Trees					
CS	31	Columnar Blue Colorado Spruce	<i>Picea pungens</i> 'Fastigiata'	3500mm ht.	W.B. single leader/ specimen
PB	22	Parkland Pillar Japanese White Birch	<i>Betula platyphylla</i> 'Jel'park'	75mm Cal.	W.B. single leader/ specimen
SL	7	Siberian Larch	<i>Larix sibirica</i>	45mm Cal. (#5 Pot)	W.B. single leader/ specimen
WS	18	White Spruce	<i>Picea glauca</i>	2400-3000mm ht.	W.B. single leader/ specimen

PLANT SCHEDULE - ADDITIONAL PLANTS

Key	Total Qty	Common Name	Botanical Name	Size	Remarks
Trees					
CS	1	Columnar Blue Colorado Spruce	<i>Picea pungens</i> 'Fastigiata'	3500mm ht.	W.B. single leader/ specimen
Shrubs					
rd	7	Red Osier Dogwood	<i>Cornus stolonifera</i>	450-600mm ht.	container / specimen
hc	3	American Highbush Cranberry	<i>Viburnum trilobum</i>	450-600mm ht.	container / specimen
pr	6	Prickly Wild Rose	<i>Rosa acicularis</i>	300-450mm ht.	container / specimen
Sod					
-	450 l.m	Nature's Turf	-	-	600mm roll

UTILITY LOCATES

NO RESPONSIBILITY IS IMPLIED OR ASSUMED BY THE ENGINEER/LANDSCAPE ARCHITECT AS TO THE LOCATION AND ELEVATION OF ANY UTILITY. THE CONTRACTOR IS RESPONSIBLE FOR DETERMINING THE EXISTENCE AND LOCATION OF ALL UTILITIES THAT MAY BE IMPACTED AND MUST CONTACT THE VARIOUS UTILITY COMPANIES FOR THIS SITE PRIOR TO COMMENCEMENT OF ANY OPERATIONS. PROVIDE ENGINEER/LANDSCAPE ARCHITECT WITH COPY OF ALL LOCATE REPORTS.

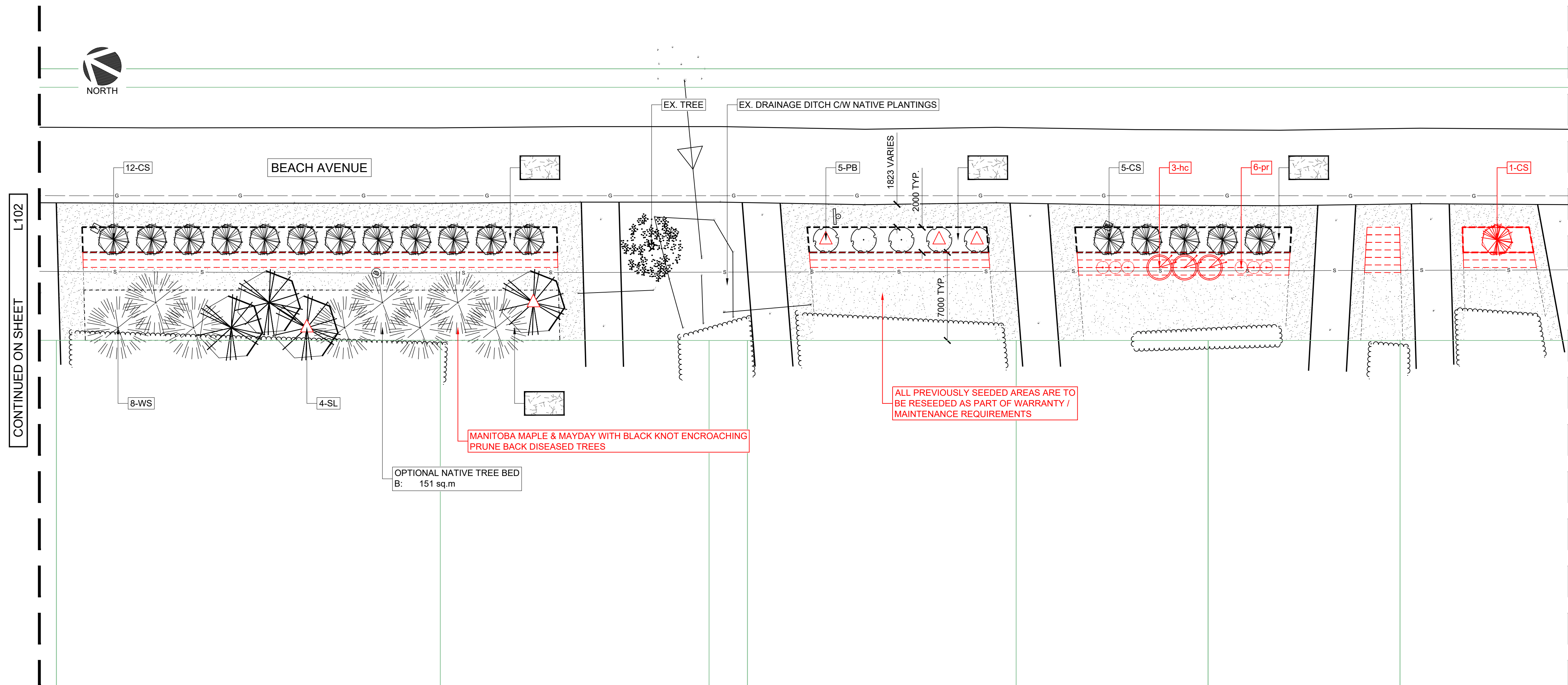


KEY PLAN

SCALE 1:5000

NOTE

- CONTRACTOR TO PROTECT ALL PLANT MATERIAL FROM WILDLIFE - ANY FURTHER DAMAGES TO PLANT MATERIAL SHALL BE REPLACED AT CONTRACTORS COST



CONTINUED ON SHEET L 102

CONTINUED ON SHEET L 104

LANDSCAPE PLAN

SCALE 1:200

THIS DRAWING AND DESIGN IS THE PROPERTY OF McELHANNEY AND SHALL NOT BE USED, REUSED OR REPRODUCED WITHOUT THE CONSENT OF McELHANNEY. McELHANNEY WILL NOT BE HELD RESPONSIBLE FOR THE IMPROPER OR UNAUTHORIZED USE OF THIS DRAWING AND DESIGN.

THIS DRAWING AND DESIGN HAS BEEN PREPARED FOR THE CLIENT IDENTIFIED, TO MEET THE STANDARDS AND REQUIREMENTS OF THE APPLICABLE PUBLIC AGENCIES AT THE TIME OF PREPARATION. McELHANNEY, ITS EMPLOYEES, SUBCONSULTANTS AND AGENTS WILL NOT BE LIABLE FOR ANY LOSSES OR OTHER CONSEQUENCES RESULTING FROM THE USE OR RELIANCE UPON, OR ANY CHANGES MADE TO, THIS DRAWING, BY ANY THIRD PARTY, INCLUDING CONTRACTORS, SUPPLIERS, CONSULTANTS AND STAKEHOLDERS, OR THEIR EMPLOYEES OR AGENTS, WITHOUT McELHANNEY'S PRIOR WRITTEN CONSENT.

INFORMATION ON EXISTING UNDERGROUND FACILITIES MAY NOT BE COMPLETE OR ACCURATE. McELHANNEY, ITS EMPLOYEES AND DIRECTORS ARE NOT RESPONSIBLE NOR LIABLE FOR THE LOCATION OF ANY UNDERGROUND CONDUITS, PIPES, CABLES OR OTHER FACILITIES WHETHER SHOWN OR OMITTED FROM THIS PLAN. PRIOR TO CONSTRUCTION CONTRACTOR SHALL EXPOSE LOCATIONS OF ALL EXISTING FACILITIES BY HAND DIGGING OR HYDROVAC AND ADVISE THE ENGINEER OF POTENTIAL CONFLICTS.



ORIGINAL DWG SIZE: ANSI D (22" x 34")



Unit 201
13455 114 Avenue NW
Edmonton AB
Canada T5M 2E2
Tel 780 809 3200

Permit

Approved Sealed

SUMMER VILLAGE OF ITASKA BEACH
#10 Norwood Close, Wetaskiwin, AB, T9A 1K2
BEACH ROAD LANDSCAPE
IMPROVEMENTS
LANDSCAPE PLAN

Drawing No.

L103

Project Number

2131-00576-01

Rev.

01

PIGEON LAKE, AB

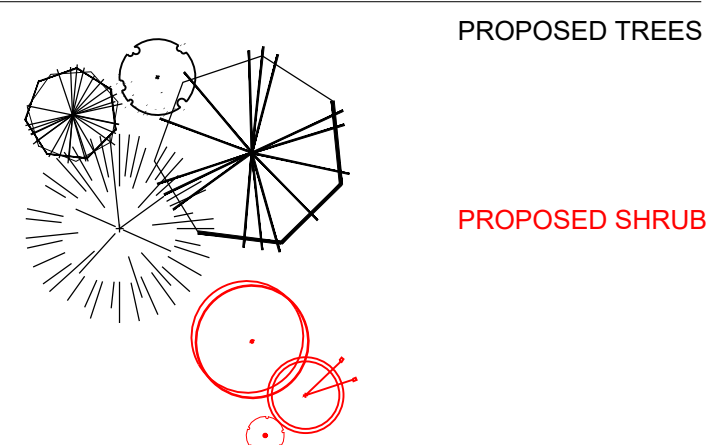
LEGEND

- RETAIN EXISTING TURF AREAS
- 100mm DEPTH SHREDDED SELF-BINDING BARK WOOD MULCH TO BE PLACED LEVEL WITH ADJACENT SURFACES, CROWN IN CENTER OF ALL SHRUB BEDS AND TREE WELLS.
- EXISTING BUSH / TREE LINE
- FIBRE OPTIC / COMMUNICATION CABLE & JUNCTION BOX
- POWER POLE W/ OVERHEAD CABLES (SHOWING DIRECTION)
- WATERLINE & MANHOLE
- CULVERT
- PROPERTY LINE
- TREE TRENCH C/W CLEAN CUT EDGE
- CLEAN CUT EDGE
- WILDFLOWER SEED EDGE
- SANITARY LINE
- GAS LINE
- ADD NATURES TURF
- ADD TREE TRENCH C/W CLEAN CUT EDGE
- TREE LEADER TO BE ADJUSTED

- ALL EXISTING TURF AREAS TO BE STRIPPED ROTO-TILLED AND FINE GRADED FOR WILDFLOWER SEED INSTALLATION.
- SHORT BUTTERFLY PRAIRIE MIX**
- 0.7% HEARTLEAF ALEXANDER
- 0.7% HAREBELL
- 0.4% YARROW
- 1.4% CUTLEAF ANEMONE
- 1.4% BLUE EYED GRASS
- 5.4% CONEFLOWER
- 2.8% PURPLE PRAIRIE CLOVER
- 0.4% PHILADELPHIA FLEABANE
- 0.7% WILD BERGAMOT
- 1.4% LONG FRUITED ANEMONE
- 0.4% DOTTED BLAZING STAR
- 0.4% MEADOW GLAZING STAR
- 5.4% SHOWY GOLDENROD
- 4.2% GAILLARDIA
- RATE OF APPLICATION OPTIONS:**
- 28 gram mix - 215 sq.ft
- 140 gram mix - 1076 sq.ft
- 700 gram mix - 5380 sq.ft

- 1.8% PINK ONION
- 2.9% UPLAND WHITE ASTER
- 2.1% WESTERN SILVERY ASTER
- 7% LOW GOLDENROD
- 3.6% MANY FLOWERED ASTER
- 1.4% WHITE PRAIRIE CLOVER
- 3.6% GUMWEED
- 0.4% WHITE CINQUEFOIL
- 1.1% ALUMROOT
- 0.4% PASTURE SAGE
- 5% SHEEP FESCUE
- 14% JUNE GRASS
- 18% LITTLE BLUESTEM
- 2% SIDE OATS GRAMA
- 11% BLUE GRAMA

PLANT SYMBOLS



PLANT SCHEDULE

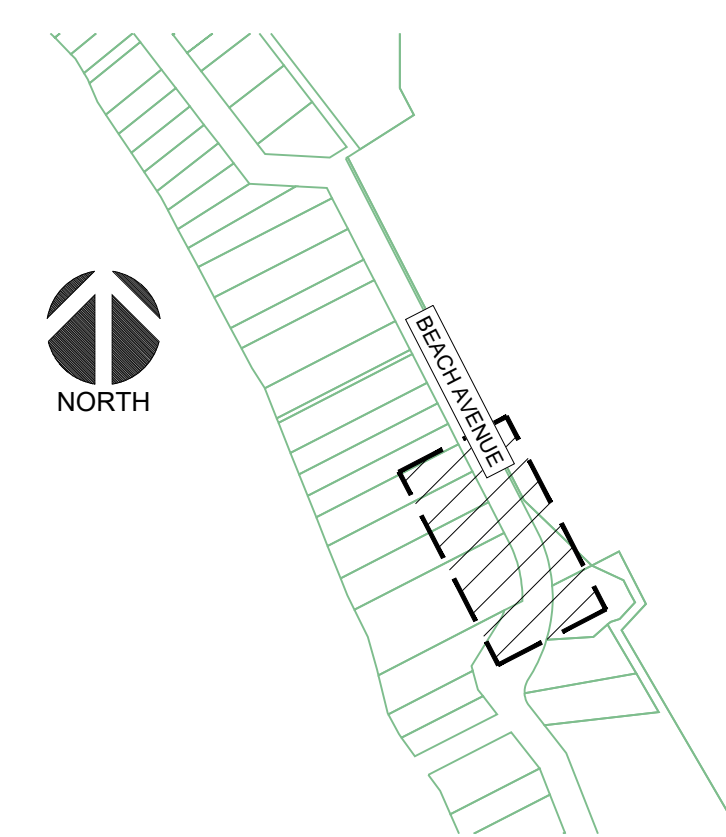
Key	Total Qty	Common Name	Botanical Name	Size	Remarks
Trees					
CS	31	Columnar Blue Colorado Spruce	<i>Picea pungens</i> 'Fastigiata'	3500mm ht.	W.B. single leader/ specimen
PB	22	Parkland Pillar Japanese White Birch	<i>Betula platyphylla</i> 'Jel'park'	75mm Cal.	W.B. single leader/ specimen
SL	7	Siberian Larch	<i>Larix sibirica</i>	45mm Cal. (#5 Pot)	W.B. single leader/ specimen
WS	18	White Spruce	<i>Picea glauca</i>	2400-3000mm ht.	W.B. single leader/ specimen

PLANT SCHEDULE - ADDITIONAL PLANTS

Key	Total Qty	Common Name	Botanical Name	Size	Remarks
Trees					
CS	1	Columnar Blue Colorado Spruce	<i>Picea pungens</i> 'Fastigiata'	3500mm ht.	W.B. single leader/ specimen
Shrubs					
rd	7	Red Osier Dogwood	<i>Cornus stolonifera</i>	450-600mm ht.	container / specimen
hc	3	American Highbush Cranberry	<i>Viburnum trilobum</i>	450-600mm ht.	container / specimen
pr	6	Prickly Wild Rose	<i>Rosa acicularis</i>	300-450mm ht.	container / specimen
Sod					
-	450 l.m.	Nature's Turf	-	-	600mm roll

UTILITY LOCATES

NO RESPONSIBILITY IS IMPLIED OR ASSUMED BY THE ENGINEER/LANDSCAPE ARCHITECT AS TO THE LOCATION AND ELEVATION OF ANY UTILITY. THE CONTRACTOR IS RESPONSIBLE FOR DETERMINING THE EXISTENCE AND LOCATION OF ALL UTILITIES THAT MAY BE IMPACTED AND MUST CONTACT THE VARIOUS UTILITY COMPANIES FOR THIS SITE PRIOR TO COMMENCEMENT OF ANY OPERATIONS. PROVIDE ENGINEER/LANDSCAPE ARCHITECT WITH COPY OF ALL LOCATE REPORTS.

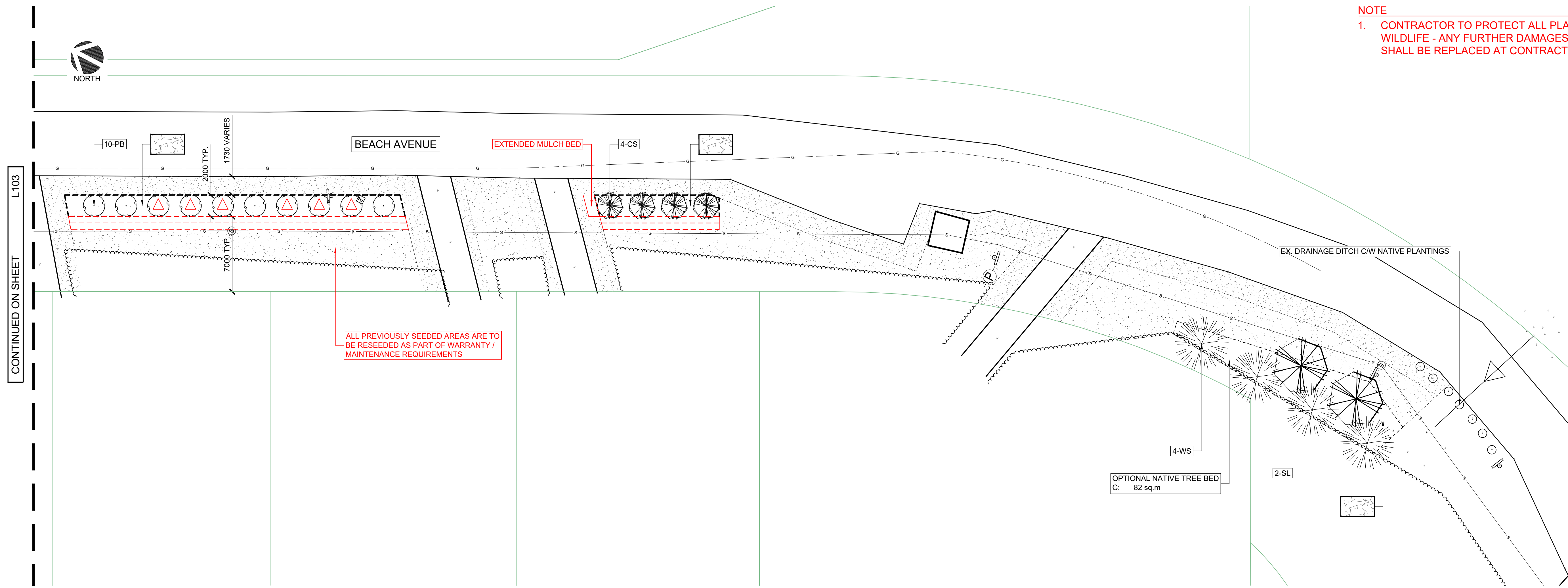


KEY PLAN

SCALE 1:5000

NOTE

- CONTRACTOR TO PROTECT ALL PLANT MATERIAL FROM WILDLIFE - ANY FURTHER DAMAGES TO PLANT MATERIAL SHALL BE REPLACED AT CONTRACTORS COST



ALL PREVIOUSLY SEEDED AREAS ARE TO BE RESEEDED AS PART OF WARRANTY / MAINTENANCE REQUIREMENTS

CONTINUED ON SHEET

LANDSCAPE PLAN

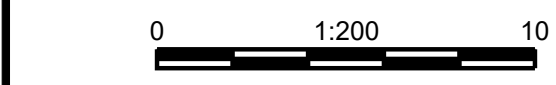
SCALE 1:200

Rev	Date	Description	Drawn	Design	App'd
01	2024-07-25	SITE INSTRUCTION 01	JM	CO	DB
00	2022-09-30	ISSUED FOR CONSTRUCTION	JM	CO	DB

THIS DRAWING AND DESIGN IS THE PROPERTY OF McELHANNEY AND SHALL NOT BE USED, REUSED OR REPRODUCED WITHOUT THE CONSENT OF McELHANNEY. McELHANNEY WILL NOT BE HELD RESPONSIBLE FOR THE IMPROPER OR UNAUTHORIZED USE OF THIS DRAWING AND DESIGN.

THIS DRAWING AND DESIGN HAS BEEN PREPARED FOR THE CLIENT IDENTIFIED, TO MEET THE STANDARDS AND REQUIREMENTS OF THE APPLICABLE PUBLIC AGENCIES AT THE TIME OF PREPARATION. McELHANNEY, ITS EMPLOYEES, SUBCONSULTANTS AND AGENTS WILL NOT BE LIABLE FOR ANY LOSSES OR OTHER CONSEQUENCES RESULTING FROM THE USE OR RELIANCE UPON, OR ANY CHANGES MADE TO, THIS DRAWING, BY ANY THIRD PARTY, INCLUDING CONTRACTORS, SUPPLIERS, CONSULTANTS AND STAKEHOLDERS, OR THEIR EMPLOYEES OR AGENTS, WITHOUT McELHANNEY'S PRIOR WRITTEN CONSENT.

INFORMATION ON EXISTING UNDERGROUND FACILITIES MAY NOT BE COMPLETE OR ACCURATE. McELHANNEY, ITS EMPLOYEES AND DIRECTORS ARE NOT RESPONSIBLE NOR LIABLE FOR THE LOCATION OF ANY UNDERGROUND CONDUITS, PIPES, CABLES OR OTHER FACILITIES WHETHER SHOWN OR OMITTED FROM THIS PLAN. PRIOR TO CONSTRUCTION CONTRACTOR SHALL EXPOSE LOCATIONS OF ALL EXISTING FACILITIES BY HAND DIGGING OR HYDROVAC AND ADVISE THE ENGINEER OF POTENTIAL CONFLICTS.



ORIGINAL DWG SIZE: ANSI D (22" x 34")



Unit 201
13455 114 Avenue NW
Edmonton AB
Canada T5M 2E2
Tel 780 809 3200

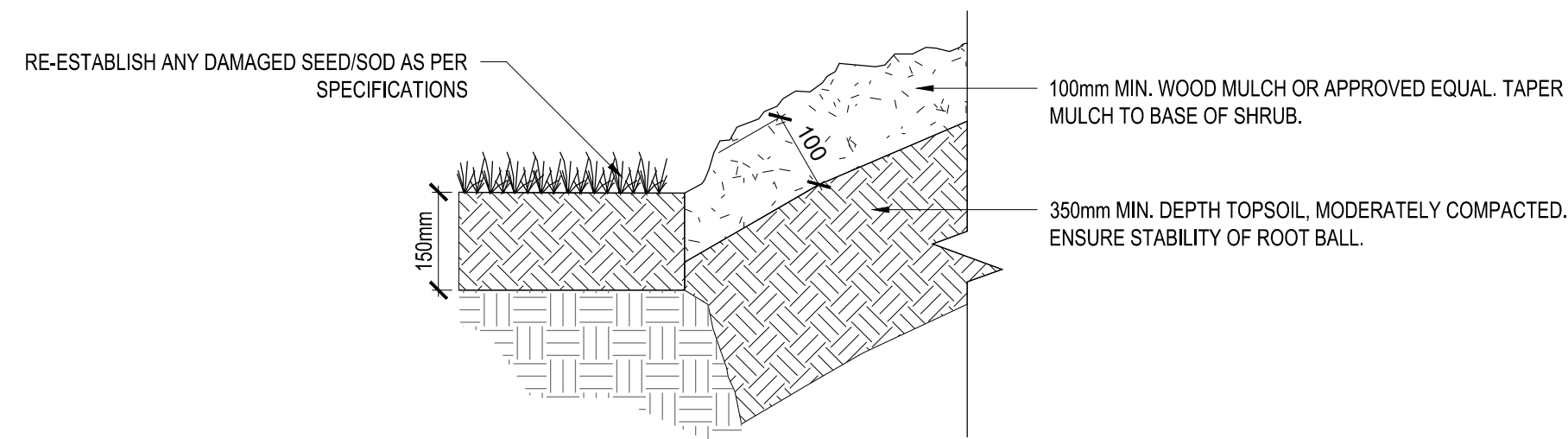
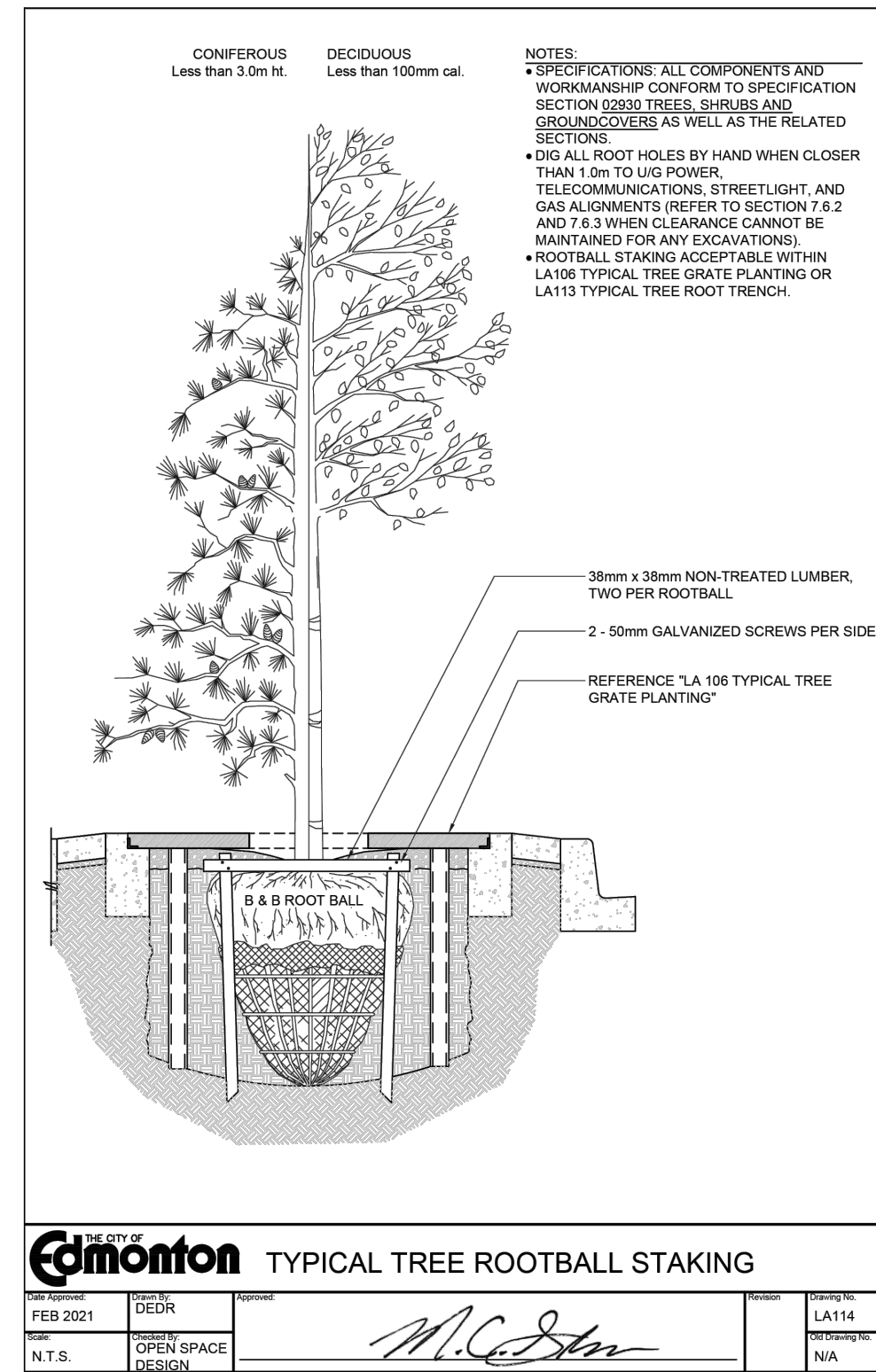
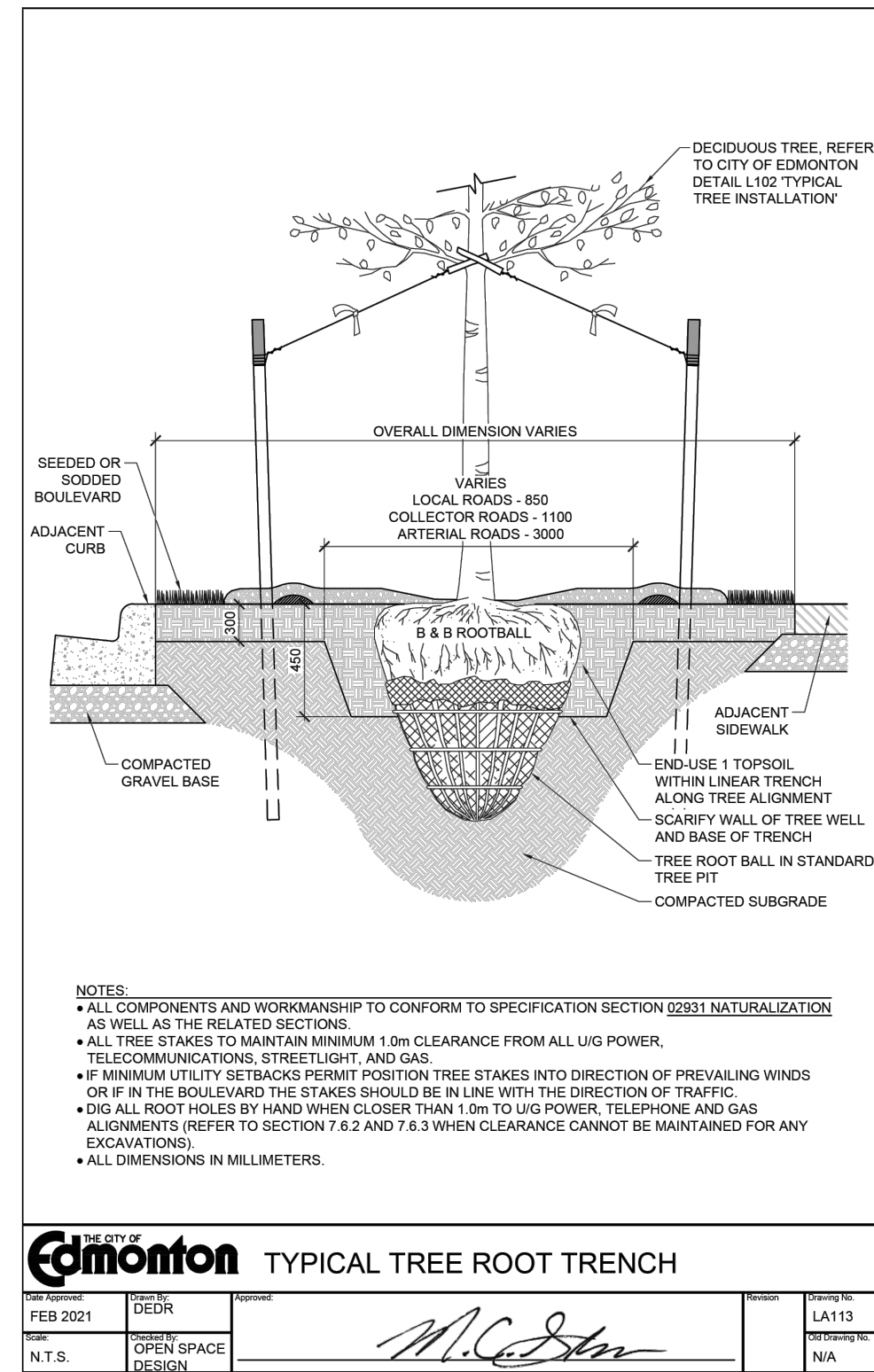
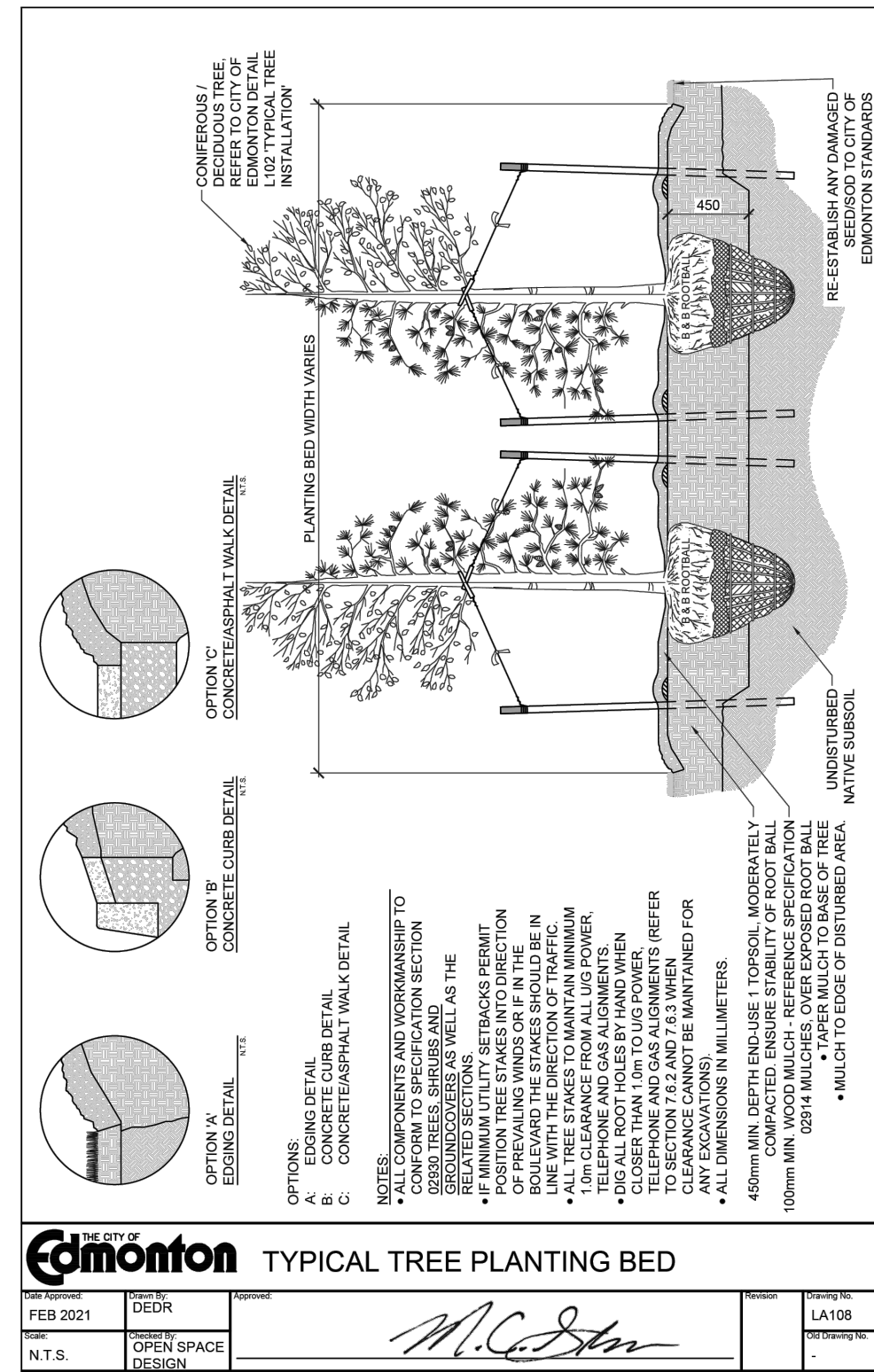
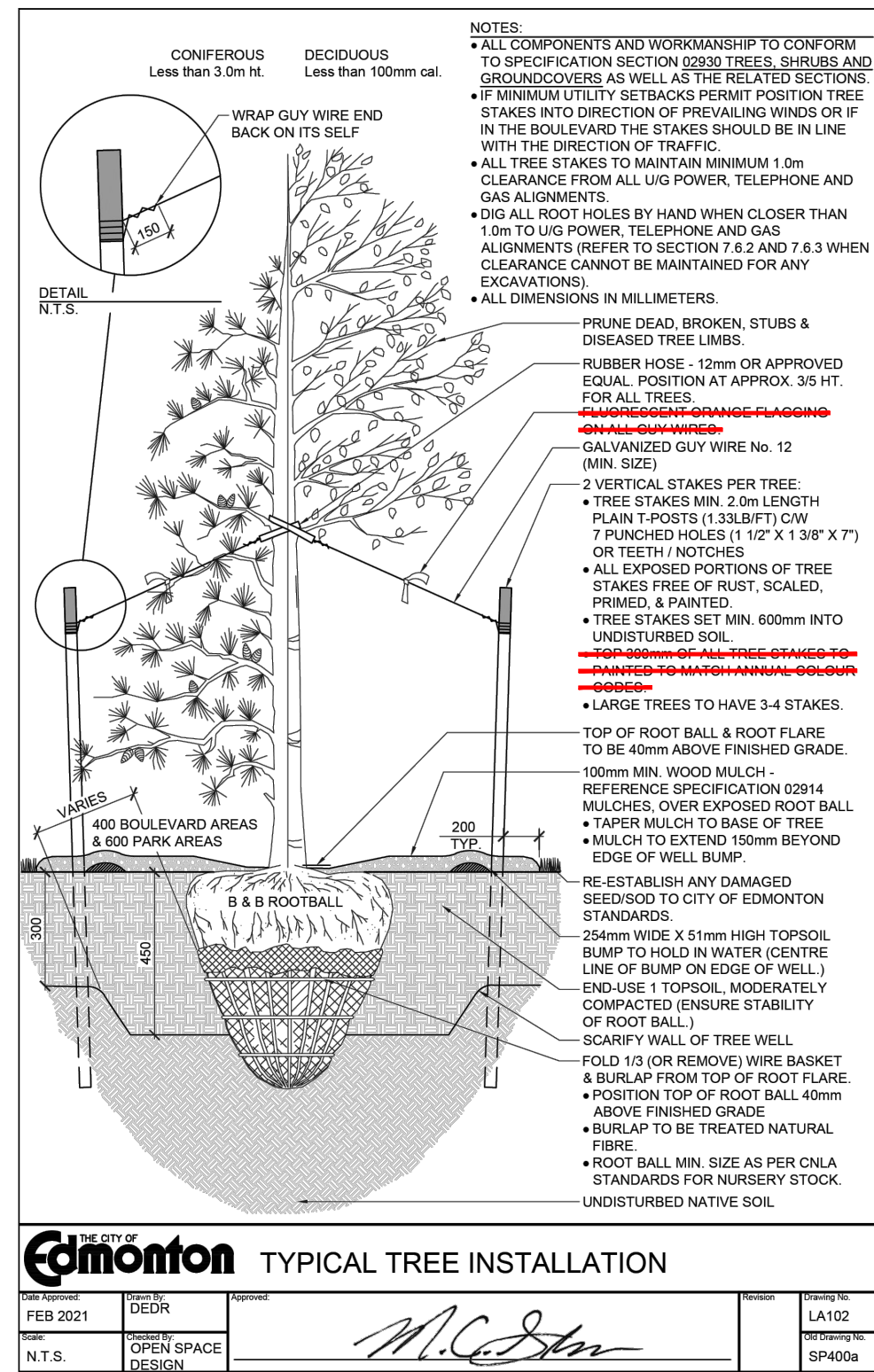
Permit

Approved Sealed

SUMMER VILLAGE OF ITASKA BEACH
#10 Norwood Close, Wetaskiwin, AB, T9A 1K2
BEACH ROAD LANDSCAPE IMPROVEMENTS LANDSCAPE PLAN

Drawing No.	
L104	
Project Number	Rev.
2131-00576-01	01

UTILITY LOCATES
 NO RESPONSIBILITY IS IMPLIED OR ASSUMED BY THE ENGINEER/LANDSCAPE ARCHITECT AS TO THE LOCATION AND ELEVATION OF ANY UTILITY. THE CONTRACTOR IS RESPONSIBLE FOR DETERMINING THE EXISTENCE AND LOCATION OF ALL UTILITIES THAT MAY BE IMPACTED AND MUST CONTACT THE VARIOUS UTILITY COMPANIES FOR THIS SITE PRIOR TO COMMENCEMENT OF ANY OPERATIONS. PROVIDE ENGINEER/LANDSCAPE ARCHITECT WITH COPY OF ALL LOCATE REPORTS.



1 CLEAN BED EDGE
 L301 SCALE H.N.T.S.

Rev	Date	Description	Drawn	Design	App'd
01	2024-07-25	SITE INSTRUCTION 01	JM	CO	DB
00	2022-09-30	ISSUED FOR CONSTRUCTION	JM	CO	DB

THIS DRAWING AND DESIGN IS THE PROPERTY OF McELHANNAY AND SHALL NOT BE USED, REUSED OR REPRODUCED WITHOUT THE CONSENT OF McELHANNAY. McELHANNAY WILL NOT BE HELD RESPONSIBLE FOR THE IMPROPER OR UNAUTHORIZED USE OF THIS DRAWING AND DESIGN.

THIS DRAWING AND DESIGN HAS BEEN PREPARED FOR THE CLIENT IDENTIFIED, TO MEET THE STANDARDS AND REQUIREMENTS OF THE APPLICABLE PUBLIC AGENCIES AT THE TIME OF PREPARATION. McELHANNAY, ITS EMPLOYEES, SUBCONSULTANTS AND AGENTS WILL NOT BE LIABLE FOR ANY LOSSES OR OTHER CONSEQUENCES RESULTING FROM THE USE OR RELIANCE UPON, OR ANY CHANGES MADE TO, THIS DRAWING, BY ANY THIRD PARTY, INCLUDING CONTRACTORS, SUPPLIERS, CONSULTANTS AND STAKEHOLDERS, OR THEIR EMPLOYEES OR AGENTS, WITHOUT McELHANNAY'S PRIOR WRITTEN CONSENT.

INFORMATION ON EXISTING UNDERGROUND FACILITIES MAY NOT BE COMPLETE OR ACCURATE. McELHANNAY, ITS EMPLOYEES AND DIRECTORS ARE NOT RESPONSIBLE NOR LIABLE FOR THE LOCATION OF ANY UNDERGROUND CONDUITS, PIPES, CABLES OR OTHER FACILITIES WHETHER SHOWN OR OMITTED FROM THIS PLAN. PRIOR TO CONSTRUCTION CONTRACTOR SHALL EXPOSE LOCATIONS OF ALL EXISTING FACILITIES BY HAND DIGGING OR HYDROVAC AND ADVISE THE ENGINEER OF POTENTIAL CONFLICTS.

ORIGINAL DWG SIZE: ANSI D (22" x 34")

McElhanney

Unit 201
 13455 114 Avenue NW
 Edmonton AB
 Canada T5M 2E2
 Tel 780 809 3200

Permit

Approved Sealed

SUMMER VILLAGE OF ITASKA BEACH
 #10 Norwood Close, Wetaskiwin, AB, T9A 1K2

BEACH ROAD LANDSCAPE IMPROVEMENTS DETAILS

PIGEON LAKE, AB

Drawing No.	
L301	
Project Number	Rev.
2131-00576-01	01